

SEAFOOD



CATFISH FILLET SHANK IQF
14024: 7-9oz 15#



COD LOIN FILLET IQF
10202: 10/1#



CRAB LEG SNOW
14042: 5-7 oz 30#
14060: 8 Up 30#



CRABMEAT IMITATION
14071: 12/2.5#



GREEN MUSSELS HALF SHELL NZ
10109: 12/2#



MIX SEAFOOD
24034: 24/1#



OCTOPUS
14000: 2-4# Avg 30#



OYSTER HALF SHELL FZ HILLMAN
10200: 1/30#



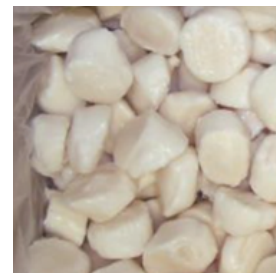
OYSTER HALF SHELL FZ
14005: 144 CT



RED SNAPPER CLEAN
10099: 1-2# 10#
17659: 2-3# 22#



SALMON BONLS/SKNLS
20807: 6 oz 10#
17359: 8 oz 10#



SCALLOP 20/30 IQF PROCESSED
20458: 2/5#



SHRIMP RAW EZPL
10107: 21/25 5/2#
10106: 31/40 5/2#



SHRIMP CKD P&D
14015: 16/20 T/Off 5/2#
14022: 31/40 T/On 5/2#
14019: 41/50 T/On 5/2#



SHRIMP RAW HLSO
10108: 16/20 T/Off 6/4#
14016: 26/30 T/On 10/4#
14013: 41/50 T/On 10/4#

Disclaimer: The images shown are for illustration purposes only and may not be an exact representation of the product.

SEAFOOD



SHRIMP RAW HOSO
10201: 20/30 10/4#
13992: 30/40 10/4#
14014: 40/50 10/4#



SHRIMP RAW PRAWN HOSO
14059: 4/6 10/4#
14076: 6/8 10/4#



SHRIMP RAW T/ON P&D
14077: P&D 13/15 5/2#
14006: P&D 16/20 5/2#
13999: P&D 21/25 5/2#
14012: P&D 26/30 5/2#



OCTOPUS SPANISH
10105: 2-4 Avg 28#



SHRIMP RAW T/OFF P&D
13994: 31/40 5/2#
14003: 41/50 5/2#
14009: 51/60 5/2#



SHRIMP RAW T/ON P&D
14002: 31/40 5/2#



SWAI FILLET N-BN N-SKIN IQF
17605: 7-9 oz 15#



TILAPIA CLEAN
14054: 350-550 Gram 40#
14051: 550-550 Gram 40#
14058: 750 Gram up 40#



TILAPIA FILLET IVP
14048: 3-5 oz 10#
14049: 5-7 oz 10#
14052: 7-9 oz 10#

NOTE:

In the seafood industry, shrimp size is measured by the number of shrimps in one pound.

Small: 51/60

Medium: 41/50

Large: 31/35

Extra large: 26/30

Extra jumbo: 16/20



Disclaimer: The images shown are for illustration purposes only and may not be an exact representation of the product.